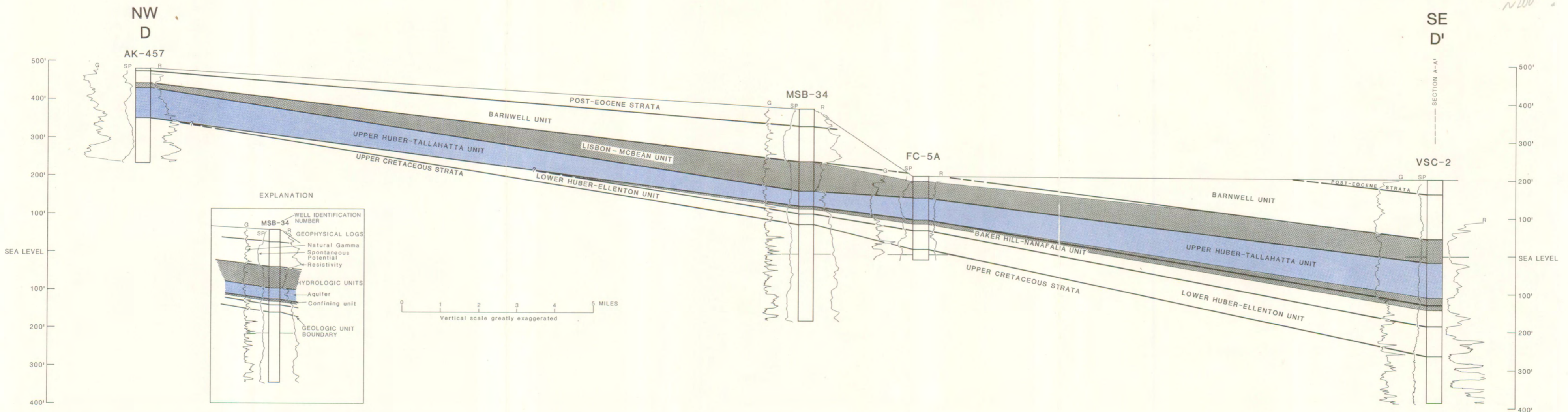


LOCATION OF HYDROGEOLOGIC SECTIONS

List of wells on hydrogeologic sections

County	Well number	Georgia Geologic Survey number	Latitude-longitude	Name or owner	Date drilled or modified	Altitude of land surface (ft)
Burke	28X1	3444	325232-0821315	USGS, Midville SEXTW-1	06-04-80	269
Emanuel	27U4	--	323606-0822115	Swainsboro, 4	07- -67	290
Johnson	24V1	3453	324209-0824302	USGS, Wrightsville Firetower, TW-1	08-29-80	355
Laurens	21U4	3524	323030-0830243	USGS, Laurens TW-3	12-16-81	282
	23T1	51	322840-0824530	Grace McCain, 1	06- -45	280
Pulaski	18T1	3511	322245-0832901	USGS, Arrowhead TW-1	04-15-81	334
Treutlen	25T2	730	322313-0823234	Gillis, 1	08- -61	351
Washington	22Y30	--	330142-0825804	American Ind. Clay, M-7	11-12-79	330
	23X28	1050	325907-0824814	Sandersville, 9	05-13-66	450
	24X5	--	335718-0823820	Sepco SX79-1 Geisbricht	1980	375
Wilkinson	19W6	1524	325104-0831958	Georgia Kaolin Co., 13	12- -65	400
	20V4	3165	324257-0831324	Willis Allen, 1	02- -76	413
Aiken, S.C.	AK-457	--	333417-0815012	Breezy Hill Subdivision	07-14-69	296
	MSB-34	--	332024-0814415	Savannah River Plant	07-20-83	380
	FC-5A	--	331834-0814138	Savannah River Plant	04-23-81	220
Barnwell, S.C.	VSC-2	--	330810-0813558	Georgia Power Company	06-11-82	590



HYDROGEOLOGY OF THE GORDON AQUIFER SYSTEM OF EAST-CENTRAL GEORGIA.