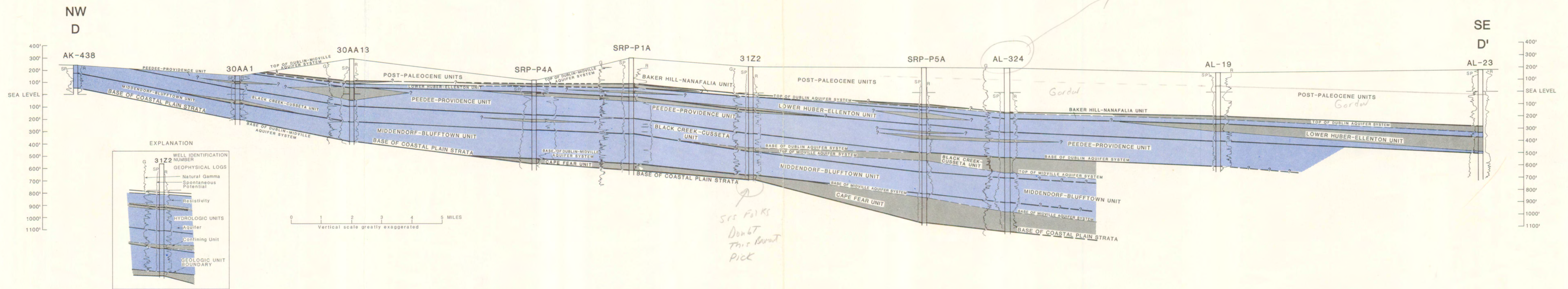


LOCATION OF HYDROGEOLOGIC SECTIONS

List of wells on hydrogeologic sections

County	Well number	Georgia Geologic Survey number	Latitude-longitude	Name or owner	Date drilled or modified	Altitude of land surface (feet)
Burke	28X1	3444	325232-0821315	USGS, Midville SEXTW-1	06-04-80	269
	31Z2	--	330828-0814542	Ga. Power Co. Plant Vogtle TW-1	03--72	217
Johnson	24V1	3453	324209-0824302	USGS, Wrightsville Firetower, TW-1	08-29-80	355
	21U4	3524	323030-0830243	USGS, Laurens TW-3	12-16-81	282
Pulaski	23T1	51	322840-0824530	Grace McCain, 1	06--45	280
	18T1	3511	322245-0832901	USGS, Arrowhead TW-1	04-15-81	334
Richmond	30AA1	585	331941-0815712	Continental Can Company	1959?	153
	30AA13	3446	331628-0815558	Kimberly-Clark Co. Observation 1	1980	287
Treutien	25T2	730	322133-0823234	Gillis, 1	08--61	351
Washington	22Y30	--	330142-0825804	American Ind. Clay, M-7	11-12-79	330
	23X28	1050	325907-0824814	Sandersville, 9	05-13-66	450
Wilkinson	24X5	--	335718-0823820	Secco SX79-1 Geisbricht	1980	375
	19W6	1524	325104-0831958	Georgia Kaolin Co., 13	12--65	400
Aiken, S.C.	20V4	3165	324257-0831324	Willis Allen, 1	02--76	413
	AK-438	--	332920-0815250	AK-438, Town of Bath	1974?	240
Allendale, S.C.	SRP-P1A	--	331707-0813949	Savannah River Plant, P1A	02-04-62	288
	SRP-P4A	--	331502-0814812	Savannah River Plant, P4A	08-07-62	105
Barnwell, S.C.	AI-19	--	330229-0812649	AI-19, Fred Whitaker Co.	10--63	162
	AI-23	--	330101-0811806	AI-23, Town of Allendale	--	181
	AI-66	--	330647-0813356	AI-66, Creek Plantation	12--78	200
Barnwell, S.C.	SRP-P5A	--	330834-0813627	Savannah River Plant, P5A	12--62	208



HYDROGEOLOGY OF THE DUBLIN AND MIDVILLE AQUIFER SYSTEMS OF EAST-CENTRAL GEORGIA.

Modified from Faye and Powell (1982)